

LAM-DAQ (Data acquisition) modul, Model T-4

USB 2.0 Full Speed connectivity to PC

Analog input channels: 16 Single-ended-16pin

- Input port : -10 -10V
- Input signal range : -10--10V (PGA = 1), - 5V-5V (PGA = 2), - 2.5V-2.5V (PGA = 4), - 2V- 2V (PGA = 5), - 1.25 V-1.25V ((PGA = 8), - 1V-1V ((PGA = 10), - 0.625V- 0.625V (PGA = 16)
- Analog Input impedance : 100K
- Resolution : 12Bit (4096)
- The maximum total error : < 0.2%
- Programmable Gain : 1,2,4,5,8,10,16
- Sampling rate : 100sps-200Ksps (multi-channel 100sps-100Ksps) Internal Clock

Analog signal output- 2 pin

- Analog output channels : two single-ended
- Analog output range : 0-10V
- Analog output current: 5 mA
- Resolution : 12Bit (4096)
- Nonlinearity error : ± 2 LSB
- Scan clock : 1sps-1000Ksps internal clock

Digital signal input / output- 8 pin

- Input / output channels: 8
- Input / output modes: full input / full output
- Input Level : TTL or CMOS compatible
- Output Level : CMOS

PWM measurement input- 1 pin

- Number : 1
- Input voltage : 0-3.3V
- Input Frequency : 1-200KHz
- Input Duty Cycle: 1% - 99%
- Frequency and duty cycle measurement error: 1%

Counter – 1 pin

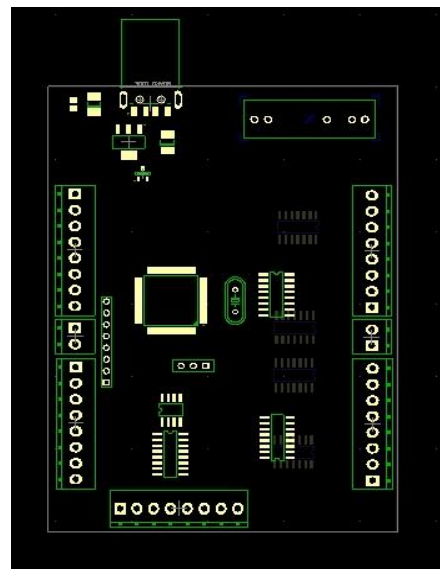
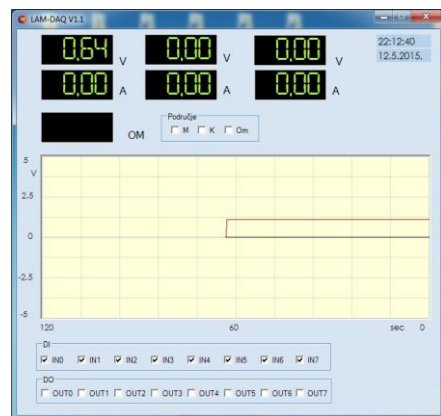
- The number of counters: 1
- Input Level : TTL or CMOS
- Count bits: 32 (maximum 65535 * 65535)

PWM output- 2 pin

- PWM output channels: 2
- PWM Output Level : CMOS
- Input Duty Cycle: 1% - 99%
- Output frequency : 1-1MHz
- Operating temperature: 0- 70 °C

Software:

- Sample code: vbnet, C++, C#, labView



Lab air media d.o.o.
Info.labairmedia.com
www.labairmedia.com